

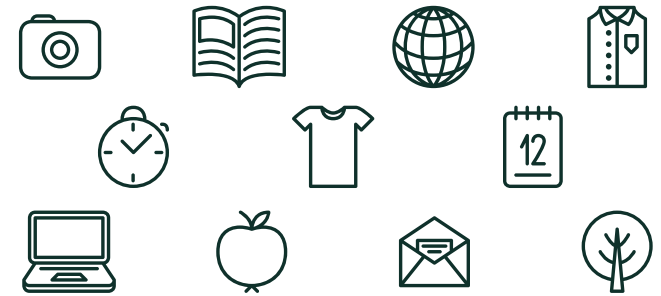
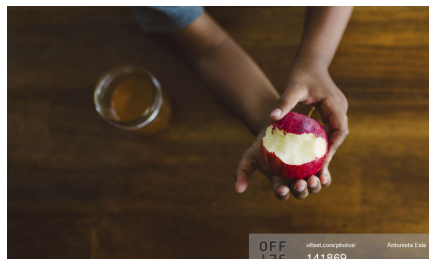
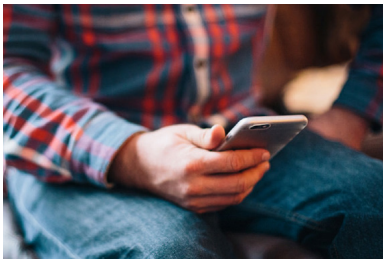
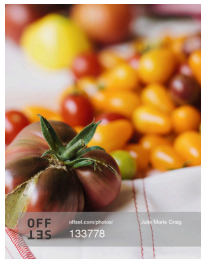


PRIMARY HEADLINES KLAVIKA

SECONDARY HEADLINES VITESSE

BODY COPY: ELENA. Egerit, ortempl iustantia proponere mis. Evideris hachucte num paremei forum us, quam te, acchus, dem atimum at. Aperoporbi it. To mentem st crum perio, se redieni hiliis po

BODY COPY: PROXIMA NOVA. Egerit, ortempl iustantia proponere mis. Evideris hachucte num paremei forum us, quam te, acchus, dem atimum at. Aperoporbi it. To mentem st crum perio, se redieni hiliis po



COLOR BREAKDOWN

PRIMARY COLORS - CSU GREEN AND GOLD



PMS 357

**C: 92
M: 18
Y: 94
K: 61**

**R: 30
G: 77
B: 43
#1E4D2B**



PMS 617

**C: 11
M: 6
Y: 64
K: 13**

**R: 200
G: 195
B: 114
#C8C372**

ACCENT COLORS

Accent colors are unique to the College of Health and Human Sciences. They are to be used sparingly to provide visual interest in various design applications.



PMS 584

**C: 21
M: 0
Y: 89
K: 0**

**R: 208
G: 219
B: 66
#D5DE53**



PMS 7599

**C: 0
M: 85
Y: 98
K: 20**

**R: 170
G: 72
B: 46
#AB4224**



PMS 570

**C: 57
M: 0
Y: 36
K: 0**

**R: 133
G: 186
B: 175
#8AC4B3**



PMS 316

**C: 97
M: 21
Y: 33
K: 73**

**R: 0
G: 62
B: 70
#003D46**



PMS 138

**C: 0
M: 52
Y: 100
K: 0**

**R: 225
G: 150
B: 62
#DF8E2E**